

ZIPPO

正品黃色火焰丁烷打火機機芯
-zh-HK
型號號碼#: Z8A20



已填充/未填充的火炬警告:

警告: 確保兒童不能接觸到打火機及其燃料。點燃打火機時要遠離面部和衣服。使用後請確保火焰已熄滅。如果已填充, 則在壓力下含有可燃氣體。如果未填充, 填充時, 將在壓力下含有可燃氣體。切勿暴露在高於攝氏50°C (華氏122°F) 的高溫或長時間放置在陽光下。切勿刺穿或放置在火源。不要持續點燃超過30秒。不要在水槽等容器上方或火焰附近補充燃料。丁烷傾向於在最低點沉降並收集。



如果您對產品的操作有任何問題, 請勿將其退回零售店。相反, 消費者應該聯繫zippo.com上列出的當地經銷商。

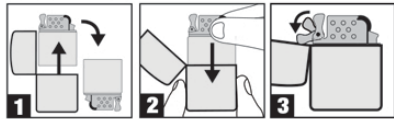
警告: 閱讀所有安全警告和說明。不遵守警告和說明可能導致產品損壞和/或嚴重受傷。應特別注意防止燙傷, 受傷或火災。保存這些說明以供日後參考。

© Zippo Manufacturing Company 2021.

65803_RA

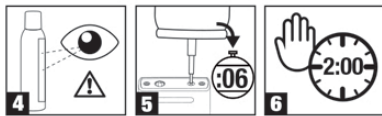
操作說明:

將插件安裝到Zippo打火機外殼中。



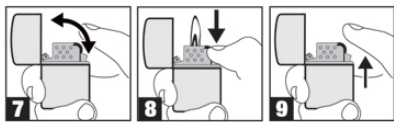
丁烷填充說明

• 在通風良好的區域注入或補充燃料。



點火:

• 向下轉動火石輪, 然後用拇指按按點火按鈕以點燃火焰。

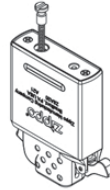


一般安全警告和說明:

- 將打火機及其燃料放在兒童接觸不到的地方。
- 點燃打火機時要遠離面部和衣服
- 使用後請確保火焰已熄滅。
- 填充時, 將在壓力下含有可燃氣體。
- 僅使用丁烷燃料。
- 不要在水槽等容器上方或火焰附近補充燃料。丁烷傾向於在最低點沉降並收集。
- 在通風良好的區域注入或補充燃料。
- 將插入物或打火機保持遠離面部。
- 使用Zippo®丁烷燃料以獲得最佳性能。
- 安全地補充燃料: 確保補充罐噴嘴和打火機灌裝閥之間正確配合。
- 再補充之前至少等待2分鐘, 然後使用插件。
- 不要持續點燃超過30秒。
- 切勿暴露在高於攝氏50°C (華氏122°F) 的高溫或長時間放置在陽光下。
- 切勿刺穿或放置在火源。
- 請勿將打火機指向臉部。
- 此插件僅適用於常規尺寸的Zippo防風打火機型號, 包括: 常規、復古、Armor®和1941年複製品。
- 不適用於Slim或1935複製型號。
- 請勿嘗試拆卸產品進行清潔或以任何方式進行修改。這將使保修失效。
- 插入或取下丁烷插件時, 務必用手指和拇指抓住較輕的外殼邊緣。抓住打火機可能會造成困難。
- 使用本產品時, 請遵循製造商提供的所有其他項目的說明和警告。

為機芯重新裝上火石:

取下燃料室端部的螺絲 (6) 和附著的彈簧。務必從打火機管中取出舊的火石。在管中裝入新的火石並且放回彈簧, 輕輕擰緊螺絲。確保螺絲擰到盡頭; 否則蓋子不能正確蓋好。如果放入新的火石之後打火機輪有些過緊, 可以向後旋轉幾次



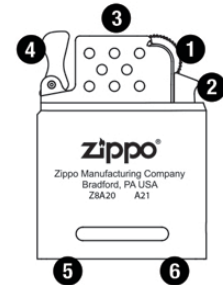
性能提示

- 與所有丁烷打火機一樣, 此打火機插件的性能受到超過5,000英尺 (1500米) 的高海拔的影響。為獲得最佳性能, 請經常使用Zippo®或Ronson®丁烷燃料。使用其他品牌可能會導致堵塞和點火率不佳, 特別是在高海拔和低於冰點的溫度下。
- 所有丁烷打火機必須保持在冰點以上才能運行。將較輕的插件存放在內袋中或用手將其加熱幾分鐘, 可使打火機在低溫下使用。

免責聲明

對於您或任何第三方可能因使用或誤用本產品而導致的任何損害, Zippo一概不負責或承擔任何責任。

正品黃色火焰丁烷打火機機芯



1. 火石輪
2. 點火按鈕
3. 火焰
4. 凸輪
5. 丁烷填充閥
6. 火石螺絲

進口商:

之寶亞洲有限公司
香港中環德輔道中39號永傑中心6樓
+852 3110 6369.

Zippo Asia Limited
Unit 10, 6/F
Siu Wai Industrial Centre
29-33 Wing Hong Street
Kowloon
Hong Kong

ZIPPO

Yellow Flame Butane Lighter Inserts
English USA – en
Yellow Flame Model #: Z8A20



FILLED/EMPTY YELLOW FLAME INSERT WARNING:

WARNING: KEEP LIGHTER AND THEIR FUELS OUT OF REACH OF CHILDREN. Ignite lighter away from face and clothing. Be sure flame is out after use. If filled, contains flammable gas under pressure. If unfilled, when filled, will contain flammable gas under pressure. Never expose to heat above 50°C (122°F) or to prolonged sunlight. Never puncture or put in fire. Do not keep lit for more than 30 seconds. Do not refuel over containers such as sinks or near a flame. Butane tends to settle and collect in the lowest point.



If you have any problems with the operation of your Product, DO NOT return it to the retail store. Instead, consumers should contact their local distributors listed on zippo.com.

WARNING: Read all safety warnings and instructions. Failure to follow the warnings and instructions may result in Product damage and/or serious injury. Extra care should be taken to prevent burn, injury, or fire. Save these instructions for future reference.

© Zippo Manufacturing Company 2021.

65803_RA

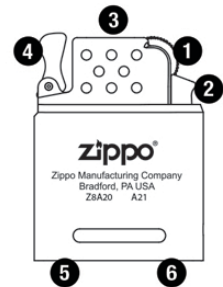
GENERAL SAFETY WARNINGS AND INSTRUCTIONS:

- Keep lighters and their fuels out of reach of children.
- Ignite lighter away from face and clothing.
- Be sure flame is out after use.
- When filled, will contain flammable gas under pressure.
- Use butane fuel only.
- DO NOT refuel over containers such as sinks or near a flame. Butane tends to settle and collect in the lowest point.
- Fill or refill in a well-ventilated area.
- Hold insert or lighter away from face.
- Use Zippo® butane fuel for best performance.
- For safe refilling: ensure proper mating between refill can nozzle and lighter filling valve.
- Wait at least 2 minutes after refilling before using the insert.
- DO NOT keep lit for more than 30 seconds.
- Never expose to heat above 50°C (122°F) or to prolonged sunlight.
- Never puncture or put in fire.
- DO NOT point lighter towards face.
- This insert is only designed to work with regular-sized genuine Zippo Windproof Lighter models including, Regular, Vintage, Armor®, and 1941 Replica.
- DOES NOT work with Slim or 1935 Replica models.
- DO NOT attempt to disassemble the Product for cleaning or modify it in any manner. This will void the warranty.
- Always grasp lighter case edge(s) with finger(s) and thumb when inserting or removing butane insert. Gripping face of lighter may cause difficulty.
- Follow all instructions and warnings provided by manufacturer of any other item when using this product.

DISCLAIMER:

ZIPPO WILL NOT BE RESPONSIBLE OR LIABLE FOR ANY DAMAGES YOU OR ANY THIRD PARTY MAY SUFFER AS A RESULT OF USE OR MISUSE OF THIS PRODUCT.

Yellow Flame Butane Lighter Insert



1. Flint wheel
2. Ignition button
3. Flame
4. Cam
5. Butane Filling Valve
6. Flint screw

To re-flint your Zippo Yellow Butane Lighter:

Insert Remove screw (6) and attached spring at the bottom of the insert. Be sure old flint is removed from tube. Place new flint in tube and replace spring, screw lightly. Be sure screw is turned as far as it will go. If wheel binds after new flint is inserted, turn wheel backwards a few times.

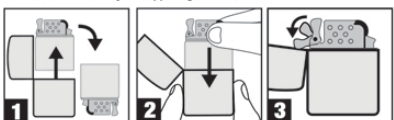


Performance Tips

- Like all butane lighters, the performance of this lighter insert is affected by high altitudes over 5,000 feet (1,500 meters). For optimum performance, always use Zippo® or Ronson® butane fuel. Use of other brands may result in clogging and poor ignition rate, especially at high altitudes and below-freezing temperatures.
- All butane lighters must be kept above freezing in order to operate. Storing lighter insert in an inner pocket or warming it in your hand for a few minutes will enable the lighter to be used at cold temperatures.

OPERATING INSTRUCTIONS:

Install the Insert into your Zippo Lighter Case.



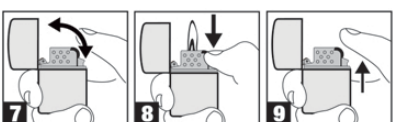
Butane Filling Instructions

• Fill or refill in a well-ventilated area.



Ignition:

• Strike the Flint Wheel in a downward motion then press the Ignition Button with your thumb and hold to ignite flame.



ZIPPO MANUFACTURING COMPANY
33 Barbour Street
Bradford, PA 16701 U.S.A.
814-368-2700
zippo.com