



## 电弧打火机插件 双光束 型号#Z8C23



如果您对产品的操作有任何疑问，请勿将其退回零售商店。消费者应联系zippo.com上列出的当地分销商。

**警告：** 阅读所有安全警告和说明。不遵守警告和说明可能会导致电击、火灾和/或严重伤害。保存本说明，以备将来参考。

### 一般安全警告和说明

置于儿童接触不到的地方。

请勿将电池暴露于高温或置于火中，否则可能导致爆炸。

请勿暴露于强烈阳光照射或温度超过120°F (49°C) 的环境中。请勿置于潮湿环境或浸入液体中。

要谨慎对待过度的跌落、颠簸、撞击或其他对产品造成的影响。如果由于任何原因造成产品损坏，例如凹陷、刺穿、撕裂、变形或腐蚀，请停止使用并按照本手册“电池安全处置”部分所述采取正确处理。

请勿尝试使用附带的充电电缆以外的任何方法、设备或接线为产品充电，以避免过热、泄漏或爆炸的隐患。

请勿尝试使用产品为其他设备充电。

如果产品过热，散发异味，变形，损坏或显示异常操作，请立即停止使用并联系Zippo。

在长时间存放之前，请将产品充满电。

不使用产品时，建议至少每三（3）个月充一次电。

随着时间推移，所有电池都会因自放电而损失储能，在较高温度下尤为明显。

**重要事项：** 仅限使用列出/认证的ITE电源。

点燃打火机时，远离面部和衣物。

该插件仅适用于标准尺寸的Zippo防风打火机。包括：标准、复古、Armor® 和1941复刻版型号。不适用于Slim或1935复刻版型号。

除非安装在正品Zippo防风打火机外壳中，否则请勿使用。

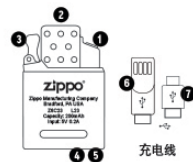
请勿尝试拆卸产品进行清洁或以任何方式进行改装。这样做将导致保修失效。

在插进或取下插件时，务必用手指和拇指抓住打火机外壳边缘。抓住打火机正面有一定的难度。

使用本产品时，请遵守其他部件厂家提供的所有说明书和注意事项。

### 免责声明：

对于因使用或不当使用本品而造成的任何损害，Zippo对您或任何第三方概不承担任何损害赔偿赔偿责任。

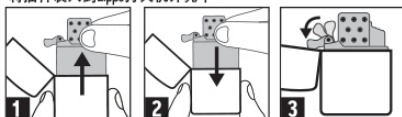


### 电弧打火机插件

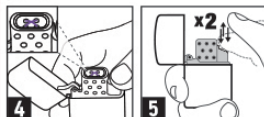
1. “双发连击”点火按钮
2. 双等离子体电弧束
3. 凸轮
4. 电池电量指示灯
5. USB-C端口 (INPUT用于产品充电)
6. 充电线 - USB端
7. 充电线 - USB-C端

### 使用说明书

将插件装入到Zippo打火机外壳中

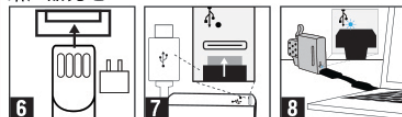


### 点火



注意：电弧束将在连续10秒后自动关闭。只需压下两次点火按钮并按住即可重新点火。

### 给产品充电



蓝色指示灯将有以下指示：

常亮 = 正在充电

熄灭 = 充电完成

闪烁 = 电池电量低/需要充电

该产品在出厂时已部分充电，必须在第一次使用前充满电。

### 安全电池处置

切勿将电池丢入垃圾中

所有充电电池会随着时间推移而性能退化，最终限制电池充电的储能能力。本装置包含一个锂离子电池组，在储能失效时必须予以妥善处置。

废弃电器产品不应与生活垃圾一起处置。请前往相应设施进行回收处置。请向当地的权威机构或零售商咨询回收建议。此符号表示不得将设备丢弃到一般垃圾中，而应单独收集并按照当地法规正确回收。



处置本产品时，请遵守当地条例。

进口商：之宝（中国）户外产品有限公司  
地址：江苏省太仓市浮桥镇龙江路601号  
电话：400 910 8666



## Arc Lighter Insert

Double Beam Model #Z8C23

If you have any problems with the operation of your Product, DO NOT return it to the retail store. Instead, consumers should contact their local distributors listed on zippocom.

**WARNING:** Read all safety warnings and instructions. Failure to follow the warnings and instructions may result in electric shock, fire and/or serious injury. Save these instructions for future reference.

### GENERAL SAFETY WARNINGS AND INSTRUCTIONS:

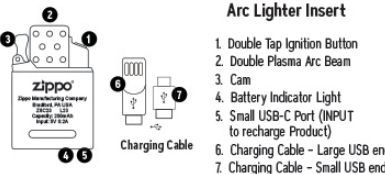
- Keep out of reach of children.
- DO NOT expose battery to intense heat or dispose in a fire as this may result in an explosion.
- DO NOT expose to intense sunlight or temperatures above 120°F (49°C). DO NOT expose to moisture or submerge in liquid.
- Be cautious of excessive drops, bumps, abrasions or other impacts to this Product. If there is any damage to the Product, such as dents, punctures, tears, deformities or corrosion, due to any cause, discontinue use and dispose of it properly as outlined in the Safe Battery Disposal section in this manual.
- DO NOT attempt to charge Product using any method, apparatus or connection other than the included charging cable to avoid the potential for overheating, leaking or explosion.
- DO NOT attempt to use Product to charge another device.
- If the Product is excessively hot, is emitting odor, becomes deformed, damaged, or demonstrates abnormal operation, immediately discontinue use and contact Zippo.
- Fully charge your Product prior to any extended storage.
- When the Product is not in use, we recommend that the battery is charged at least every three (3) months.
- All batteries lose energy from self-discharge over time, especially at higher temperatures.

**IMPORTANT:** Use only with Listed/Certified ITE Power Supply.

- Ignite lighter away from face and clothing.
- This insert is only designed to work with standard-sized genuine Zippo Windproof Lighter models including: Standard, Vintage, Armor®, and 1941 Replica. DOES NOT work with Slim or 1935 Replica models.
- DO NOT use unless installed in a genuine Zippo Windproof Lighter case.
- DO NOT attempt to disassemble the Product for cleaning or modify it in any manner. This will void the warranty.
- Always grasp lighter case edge(s) with finger(s) and thumb when inserting or removing insert. Gripping face of lighter may cause difficulty.
- Follow all instructions and warnings provided by manufacturer of any other item when using this product.

### DISCLAIMER:

ZIPPO WILL NOT BE RESPONSIBLE OR LIABLE FOR ANY DAMAGES YOU OR ANY THIRD PARTY MAY SUFFER AS A RESULTS OF USE OR MISUSE OF THIS PRODUCT.

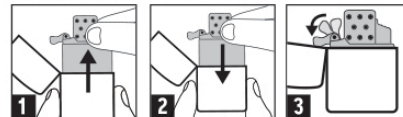


### Arc Lighter Insert

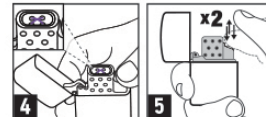
1. Double Tap Ignition Button
2. Double Plasma Arc Beam
3. Cam
4. Battery Indicator Light
5. Small USB-C Port (INPUT to recharge Product)
6. Charging Cable - Large USB end
7. Charging Cable - Small USB end

### OPERATING INSTRUCTIONS:

Install the Insert into your Zippo Lighter Case.

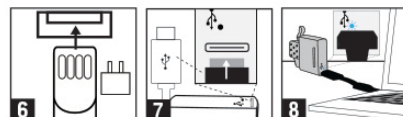


### IGNITION:



**NOTE:** Beam will automatically shut off after 10 continuous seconds. Simply double press and hold ignition button to relight.

### RECHARGING THE PRODUCT:



**BLUE indicator lights will indicate the following:**

Solid = Charging

No Light = Charging complete

Flashing = Low Battery / Needs Charging

The Product is shipped with a partial charge and must be fully charged before using the first time.

### SAFE BATTERY DISPOSAL:

**Never dispose of batteries in the garbage.**

- All rechargeable batteries will degrade over time, eventually limiting the battery's ability to retain a charge. This unit contains a lithium ion rechargeable battery pack, which must be disposed of properly when it will no longer retain a charge.
- Waste electrical products should not be disposed of with household waste. Please recycle where facilities exist. Check with your local Authority or retailer for recycling advice. This symbol indicates that the equipment must NOT be thrown into general waste but should be separately and properly recycled under local regulations.
- Follow local ordinances when disposing of this product.



Zippo (China)  
Outdoor Products Co., Ltd.  
601 Longjiang Road, Fuzhou Town,  
Taicang City, Jiangsu Province,  
China  
Phone: 400 910 8666

ZIPPO MANUFACTURING COMPANY  
33 Barbour Street  
Bradford, PA 16701 U.S.A.  
zippo.com

© Zippo Manufacturing Company 2025.

18929\_r0