

# Zippo®

丁烷火炬打火机内胆  
- cn  
单火炬型号#Z8A19  
双火炬型号#Z8B19



### 加注/未加注火炬警告:

**警告:** 将打火机及燃料置于儿童无法接触到的地方。点燃打火机时, 远离面部、衣服。使用后确认火焰熄灭。如果已加注, 则含有受压的可燃气体。如果未加注, 则在加注后含有受压的可燃气体。切勿将打火机暴露于高于50°C (122°F) 的高温或长时间日光照射。切勿穿孔或扔进火里。在可视火焰上方最热。应特别注意防止烧伤、烫伤或火灾。打火时间不得超过10秒。不要在散热器等容器或火焰附近加注。丁烷气容易下沉并聚集在低处。



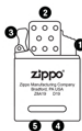
如果您对产品操作有任何问题, 请勿将产品退回零售店。消费者应联系zippo.com所列的当地经销商。

**警告:** 请阅读所有的安全警告和说明。不遵守警告和说明可能导致产品损坏和/或严重人身伤害。应特别注意防止烧伤、烫伤或火灾。保存本说明以供后期参考

181916-a

### 免责声明:

对于因使用或不当使用本品而造成的任何损害, Zippo对您或任何第三方概不承担任何损害赔偿責任。

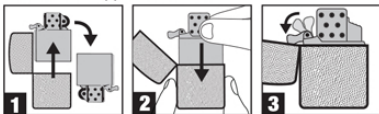


### 丁烷火炬打火机内胆

- 1、点火按钮
- 2、火焰
- 3、凸轮
- 4、丁烷注入阀
- 5、火焰调整装置

### 使用说明

将内胆装入到Zippo打火机外壳中



1

2

3

点火

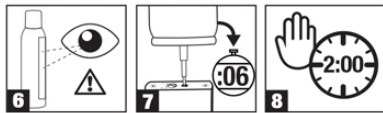


4

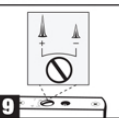
5

### 丁烷注入说明

- 在通风良好的区域注入或加注。



### 火焰调节



9

### 性能提示

- 与所有丁烷打火机一样, 本款打火机内胆的性能受到超过5,000英尺(1500米)的高海拔的影响。要获得最佳性能, 请务必使用Zippo®或Ronson®丁烷燃料。使用其他品牌可能导致堵塞和点燃率不佳, 特别是在高海拔、冰点以下的环境。

- 所有丁烷打火机需在冰点以上使用。将火机的内胆放在贴身口袋或使用手捂热数分钟, 即可在低温下使用打火机。

进口商: 之宝(中国)户外产品有限公司  
中国江苏省苏州市太仓港区北环路行政服务中心16楼  
电话: 400 910 8666

ZIPPO MANUFACTURING COMPANY  
33 Barbour Street  
Bradford, PA 16701 U.S.A.  
zippo.com

### 一般安全警告和说明

- 将打火机及燃料置于儿童无法接触到的地方。
- 点燃火机时, 远离面部、衣服。
- 使用后确认火焰熄灭。
- 如果加注, 则在加注后含有受压的可燃气体
- 仅可使用丁烷燃料。
- 不要在散热器等容器或火焰附近加注。丁烷气容易下沉并聚集在低处。
- 在通风良好的区域注入或加注。
- 使内胆或打火机远离面部。
- 使用Zippo®丁烷专用燃料以获得最佳性能。
- 为安全加注: 请确保加注喷嘴和打火机注入阀对准到位。
- 在加注后至少等候2分钟, 然后再使用内胆。
- 打火时间不得超过10秒。
- 切勿将火机暴露于高于50°C (122°F) 的高温或长时间日光照射。
- 切勿穿孔或扔进火里。
- 在可视火焰上方最热。在亮光下火焰不可见。
- 请勿将打火机靠近面部。
- 此内胆仅适用于普通尺寸的芝宝(Zippo)防风打火机型号, 包括: 普通、复古、Armor®和1941复刻版型号。
- 不适用于Slim或1935复刻版型号。
- 请勿尝试拆卸产品进行清洁或进行任何改装。此举将导致保修失效。
- 在插进或取下丁烷内胆时, 务必用手指和拇指抓住火机外壳边缘。抓住打火机正面有一定的难度。
- 使用本产品时, 请遵守其他部件厂家提供的所有说明书和注意事项。



## Butane Torch Lighter Inserts

English USA – en

Single Torch Model #Z8A19

Double Torch Model #Z8B19 rA

### FILLED / UNFILLED TORCH INSERT WARNINGS:

**WARNING: KEEP LIGHTER AND THEIR FUELS OUT OF REACH OF CHILDREN.** Ignite lighter away from face and clothing. Be sure flame is out after use. If filled, contains flammable gas under pressure. If unfilled, when filled, will contain flammable gas under pressure. Never expose to heat above 50°C (122°F) or to prolonged sunlight. Never puncture or put in fire. Extreme heat is present above the visible flame. Extra care should be taken to prevent burn, injury or fire. Do not keep lit for more than 10 seconds. Do not refill over containers such as sinks or near a flame. Butane tends to settle and collect in the lowest point.



If you have any problems with the operation of your Product, **DO NOT return it to the retail store.** Instead, consumers should contact their local distributors listed on [zippo.com](http://zippo.com).

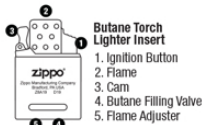
**WARNING:** Read all safety warnings and instructions. Failure to follow the warnings and instructions may result in Product damage and/or serious injury. Extra care should be taken to prevent burn, injury, or fire. Save these instructions for future reference.

### GENERAL SAFETY WARNINGS AND INSTRUCTIONS:

- Keep lighters and their fuels out of reach of children.
- Ignite lighter away from face and clothing.
- Be sure flame is out after use.
- When filled, will contain flammable gas under pressure.
- Use butane fuel only.
- DO NOT refill over containers such as sinks or near a flame. Butane tends to settle and collect in the lowest point.
- Fill or refill in a well-ventilated area.
- Hold insert or lighter away from face.
- Use Zippo® butane fuel for best performance.
- For safe refilling: ensure proper mating between refill can nozzle and lighter filling valve.
- Wait at least 2 minutes after refilling before using the insert.
- DO NOT keep lit for more than 10 seconds.
- Never expose to heat above 50°C (122°F) or to prolonged sunlight.
- Never puncture or put in fire.
- Extreme heat is present above the visible flame. Flame may NOT be visible in bright light.
- DO NOT point lighter towards face.
- This insert is only designed to work with regular-sized genuine Zippo Windproof Lighter models including: Regular, Vintage, Armor®, and 1941 Replica.
- DOES NOT work with Slim or 1935 Replica models.
- DO NOT attempt to disassemble the Product for cleaning or modify it in any manner. This will void the warranty.
- Always grasp lighter case edge(s) with finger(s) and thumb when inserting or removing butane insert. Gripping face of lighter may cause difficulty.
- Follow all instructions and warnings provided by manufacturer of any other item when using this product.

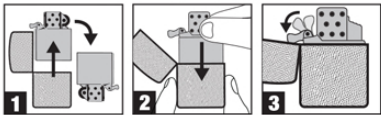
### DISCLAIMER:

ZIPPO WILL NOT BE RESPONSIBLE OR LIABLE FOR ANY DAMAGES YOU OR ANY THIRD PARTY MAY SUFFER AS A RESULT OF USE OR MISUSE OF THIS PRODUCT.

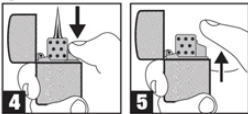


### OPERATING INSTRUCTIONS:

Install the Insert into your Zippo Lighter Case.

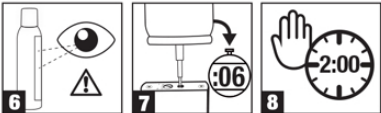


### Ignition

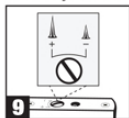


### Butane Filling Instructions

- Fill or refill in a well-ventilated area.



### Flame Adjustment



### Performance Tips

- Like all butane lighters, the performance of this lighter insert is affected by high altitudes over 5,000 feet (1,500 meters). For optimum performance, always use Zippo® or Ronson® butane fuel. Use of other brands may result in clogging and poor ignition rate, especially at high altitudes and below-freezing temperatures.
- All butane lighters must be kept above freezing in order to operate. Storing lighter insert in an inner pocket or warming it in your hand for a few minutes will enable the lighter to be used at cold temperatures.

### Zippo (China)

Outdoor Products Co., Ltd.  
16F, Administrative Service Center,  
Beihuan Road, Taicang Port Area,  
Suzhou, Jiangsu Province  
Phone: 400 910 8666

### ZIPPO MANUFACTURING COMPANY

33 Barbour Street  
Bradford, PA 16701 U.S.A.

[zippo.com](http://zippo.com)