

zippo

正宗 Zippo 防风打火机

超越时空的设计，准确无误的“打火”……
从高品质的材料和工艺到终生保修，这些
特色为拥有 Zippo 打火机带来无限的满足。

逾 80 年以来，Zippo 防风打火机始终经久耐
用、从未改变，这个事实本身就证明其深受数
百万使用者和收藏家的青睐。

zippo.com.cn

©2017 Zippo Manufacturing Company.



警告：请将打火机放在儿童触摸不到的地方。

打火时请远离面部和衣物。填充燃料的打火机含有
易燃液体。远离超过 50°C 的热源，并避免长时间日
晒。请勿穿孔或置于火中。使用后请确保火焰已完
全熄灭。本打火机不会自动熄灭，须合上盖子熄灭
火焰。燃料会刺激皮肤，不得填充过满。

本打火机不能防止儿童操作。

181450-e

如何填充您的 Zippo 打火机

- 请仅使用 Zippo 燃料填充。
- 用一只手拿住打火机。用另一只手拆掉打火机的
堵头 (1)。
- 请慢慢填充，不得填充过满。提起毡垫，露出燃料室
(2) 中的填充材料。使用 Zippo 打火机燃料浸透填充材
料。当燃料到达填充材料的顶部时，请停止填充。装
料过满可能会造成燃料泄漏。燃料是皮肤刺激物。
- 在打火之前把打火机和双手擦干。将打火机堵头放回
到盒内。如果填充过满，请不要将其放入衣兜中，也
不要靠近皮肤。当皮肤接触燃料时，请冲洗受到影响
的部位。如果皮肤刺激持续或恶化，请就医。
- 在打火之前，请确认已经关上燃料罐，并且附近也没
有溢出燃料。燃料是易燃液体。

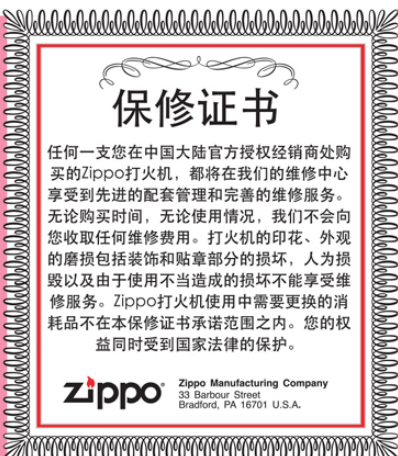
如何给 Zippo 打火机重新装火石

取下螺丝 (3) 并将弹簧放到燃料室的端部。务必从打火
机管中取出旧的火石。在管中装入新的火石并更换弹簧，
轻轻旋入。确认螺丝旋到头；否则盖子不能正确盖好。
如果插入新的火石之后打火机电轮有些过紧，
可以向后旋转几次。

提示：将额外的火石保存在毡垫下 (4)。

机芯的维护

当打火机机芯由于碳化而变黑时，使用镊子将其向外拔出，
直到出现干净的打火机芯部分 (大约 1 厘米)，然后修剪
机芯头，使其与喷火口齐平。每年进行此项维护一到两次。
在修剪机芯两、三次之后，将有必要更换机芯。有关
更详细的信息，请访问下列网站。



保修证书

任何一支您在中国大陆官方授权经销商处购
买的 Zippo 打火机，都将在我们的维修中心
享受到先进的配套管理和完善的维修服务。
无论购买时间，无论使用情况，我们不会向
您收取任何维修费用。打火机的印花、外观
的磨损包括装饰和贴章部分的损坏，人为损
毁以及由于使用不当造成的损坏不能享受维
修服务。Zippo 打火机使用中需要更换的消
耗品不在本保修证书承诺范围之内。您的权
益同时受到国家法律的保护。

zippo

Zippo Manufacturing Company
33 Barbour Street
Bradford, PA 16701 U.S.A.

对于维修说明，请登录 www.zippo.com.cn

配套使用 Zippo 打火机燃料、火石及棉线。

Zippo 打火机燃料是 Zippo 防风打火机的专用
燃料，可清洁快速燃烧，且火焰持久。



进口商：之宝（中国）户外产品有限公司
中国江苏省苏州市太仓港区北环路行政服务
中心16楼

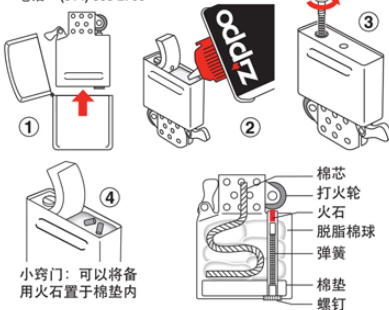
电话：400 910 8666

美国制造，之宝制造公司

美国宾夕法尼亚州布拉德福巴布尔街33号

邮政编码：16701

电话：(814) 368 2700



小窍门：可以将备
用火石置于棉垫内

香港发明专利
中国发明专利
中国发明专利

专利号
专利号
专利号

HK 1084720B
CN ZL200480000794.6
CN ZL01810149.6

zippo

Genuine Zippo Windproof Lighter

From timeless design to the unmistakable "click"... from the quality of materials and workmanship to the Lifetime Guarantee... these are the features that make a Zippo lighter so satisfying to own.

The fact that the Zippo windproof lighter has endured, virtually unchanged, for over 80 years is proof of its appeal to millions of users and collectors.

zippo.com.cn

©2017 Zippo Manufacturing Company.



WARNING: KEEP OUT OF REACH OF CHILDREN.

Ignite lighter away from face and clothing. When filled, will contain flammable fluid. Never expose to heat above 50° C or to prolonged sunlight. Never puncture or put in fire. Be sure flame is out after use. This lighter does not self-extinguish – close cover to put out. Fuel is a skin irritant, do not overfill.

THIS LIGHTER IS NOT CHILD RESISTANT.

To fill your Zippo lighter

- Fill only with Zippo fluid.
- Hold lighter in one hand. Use the other hand to remove lighter insert (1).
- Fill slowly, never overfill. Lift felt pad to reveal the packing material in the fuel chamber (2). Saturate the packing with Zippo lighter fluid. Stop filling when fuel reaches top of packing. If overfilled it can leak fuel. Fuel is a skin irritant.
- Wipe lighter and hands dry before igniting. Return lighter insert into case. If overfilled, do not put in pocket or next to skin. If fuel gets on skin, wash the affected area. If irritation persists or worsens, see a Doctor.
- Be sure fuel can is closed and there is no spilled fuel in vicinity before igniting. This is flammable fluid.

To re-flint your Zippo lighter

Remove screw (3) and attached spring at end of fuel chamber. Be sure old flint is removed from tube. Place new flint in tube and replace spring, screw tightly. Be sure screw is turned as far as it will go; if not, cover will not close properly. If wheel binds after new flint is inserted, turn wheel backwards a few times.

Wick Maintenance

When wick becomes black from carbon, pull it up with tweezers until clean wick appears (approx. 1 cm), then trim the end making it even with the chimney height. Perform this maintenance 1 or 2 times a year. It will be necessary to replace the wick after it has been trimmed more than 2 or 3 times. For more information visit the website listed.

THE WORLD FAMOUS ZIPPO GUARANTEE

Any Zippo pocket lighter purchased in mainland China from an authorized dealer, when returned to our repair clinic, will be put in first class mechanical condition free of charge, for we have yet to charge a cent for the repair of a Zippo pocket lighter, regardless of age or condition. However, the finish and appearance, including decoration and emblem, are not guaranteed. Intentional damage or any damage caused by wrongful operation will not be repaired. This guarantee does not cover the replacement of consumable items contained in Zippo pocket lighters.

This guarantee is additional to your statutory rights under national law.

zippo Zippo Manufacturing Company
33 Barbour Street
Bradford, PA 16701 U.S.A.

For repair instructions, log onto www.zippo.com.cn

Always use genuine Zippo fluid, flints and wicks.

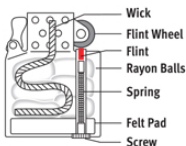
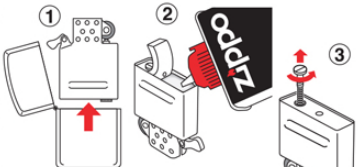
Zippo lighter fluid is specially formulated for Zippo windproof lighters. It is clean burning, quick lighting, and long lasting.

Zippo (China)
Outdoor Products Co., Ltd.
16F, Administrative Service Center,
Beihuan Road, Taicang Port Area,
Suzhou, Jiangsu Province
Phone: 400 910 8666



Hong Kong Invention Patent
China Invention Patent
China Invention Patent

Patent No. HK-10847208
Patent No. CN ZL20048000794.6
Patent No. CN ZL101810149.6



TIP: Keep extra flint supply under felt pad (4).