

Spiral Fire Feature

Instruction Manual

Page 1 of 12

843809_rB

Model Nos. Z11A23 & Z11B23

©2024 Zippo Manufacturing Company



Congratulations and thank you for purchasing the ZIPPO® Spiral Fire Feature.

Like many ZIPPO Products, this reusable patio product has been designed and manufactured to withstand the outdoors. The Spiral Fire has been tested in accordance with ASTM-F3363-19 for unvented liquid/gel fuel burning portable devices.

It's important you read and understand this entire manual before attempting to assemble and operate the Product. The following warnings and symbols shown below are listed on the subsequent pages and are located throughout this manual.

We hope you respect and follow these directions so you can safely enjoy this product for years to come.

WARNING

Failure to comply with the precautions and instructions can result in serious bodily injury and property loss or damage from hazards of fire, explosions, or burns. Only persons who can understand and follow the instructions should use the Spiral Fire or Gel Fuel.

CAUTION

Failure to comply with the precautions and instructions can result in product damage or failure.

FIRST AID

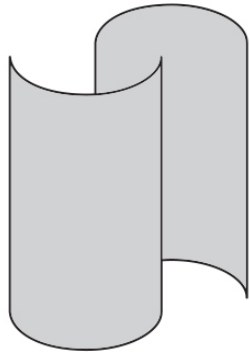
For medical Emergency Response 24 Hours a day:

- North America: 1-800-255-3924
- Worldwide: +1-813-248-0585

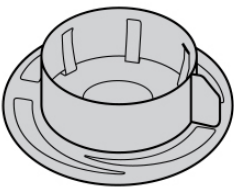




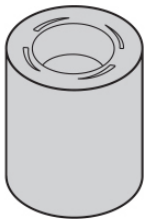
In This Box



2 Glass



1 Body



1 Fuel Cover



1 Gel Fuel
(If Included)



1 Snuffer



Support

Read all warnings and instructions before using the product.

<https://www.zippo.com/flamescapes-how-to>

If you have any problems with the operation of this product,

DO NOT Return It To The Retail Store.

If you have a question about this product, contact Zippo Consumer Relations at:

In the U.S.

- **Chat:** www.zippo.com
- **Support:** www.zippo.com/support
- **Email:** CR@zippo.com
- **Phone:** 1-888-442-1932

Mon.-Fri. 8a-5p EST



How-To Video

SCAN TO
WATCH NOW.



READ ALL WARNINGS AND INSTRUCTIONS BEFORE USING THE INCLUDED PRODUCTS.

When using a flame product, precautions should always be followed, including the following:

WARNING

TO REDUCE THE RISK OF FIRE, EXPLOSION, BURNS, OR SERIOUS INJURY:

1. Severe injury may result from improper use.
2. This Product is for **OUTDOOR USE ONLY**.
3. **NEVER** add fuel to a hot or burning device.
4. **NEVER** pour water over the Product during or immediately after operation. This can lead to an explosion, causing severe burns or serious injury.
5. Use only in a well-ventilated area.
6. Always maintain situational awareness of surroundings and others to ensure safe and proper use around flame.
7. Always have an appropriate fire extinguisher nearby.
8. Check local fire regulations and municipal bylaws for safe use in your area.
9. Always operate the Product in good physical and mental condition: fatigue, illness, alcohol or drug consumption are all indications you can no longer safely use this Product.
10. Flames are hot. Use **EXTREME CAUTION** when lighting, operating, or extinguishing the Product.
11. Flames can be difficult to see in direct sunlight.
12. **NEVER** leave the Product unattended at any time during use.
13. Keep out of the reach of children and pets.
14. Allow Product to cool before handling.
15. **NEVER** operate the Product in high winds, rain, snow or severely dry conditions.
16. The Product must only be used on solid, level, and even surfaces or grounds.
17. Maintain a minimum distance of 24 in. or 61 cm. to any flammable surface in any direction.
18. This Product is only intended for decorative use and not meant for cooking, heating, or permanent use.
19. Always use the included Snuffer to extinguish the flame when using the Spiral Fire Feature.
20. ZIPPO will not be responsible or liable for any damages you or any third party may suffer as a result of use or misuse of this Product.

GEL FUEL

WARNING

1. Flammable.
2. **NEVER** add fuel to a hot device.
3. Keep away from heat, sparks, open flames or hot surfaces when in use or during storage - no smoking.
4. Severe injury may result from improper use.
5. Eye and skin irritant. Avoid all contact with fuel.
6. Do NOT ingest. Harmful or fatal if swallowed.
7. Avoid breathing mist or vapors. May cause drowsiness or dizziness.
8. Handle canister with care.
9. IMMEDIATELY clean up any fuel spills before ignition.
10. For **OUTDOOR USE ONLY**.
11. Use only in a well-ventilated area.
12. Store in a well-ventilated area.
13. Do not store at temperatures above 120° F or 49° C.
14. Keep out of the reach of children and pets.
15. Avoid wearing any loose fitting clothing or long sleeves during ignition.
16. Take precautionary measures against static discharge.
17. Use only non-sparking tool or flat head screwdriver to remove lid.
18. Open away from you when removing lid.
19. Canisters are designed for **SINGLE USE ONLY**.
20. **NEVER** mix Gel Fuel with any other substance, refill, or transfer fuel to a previously used can. Always use a new can after each use.
21. Follow all manufacturer's warnings and instructions regarding the use of any product used in igniting Gel Fuel.
22. Use can lid or included Snuffer to extinguish flame.
23. When extinguishing with Snuffer, ensure recessed top and finger guard are both facing DOWN.
24. Do NOT use if the canister is dented or damaged.
25. Dispose or recycle responsibly according to relevant state and federal environmental laws and regulations.
26. Contains: Ethyl Alcohol, Isopropyl Alcohol.

+ FIRST AID

For Medical Emergency Response 24 Hours a day:

- North America: 1-800-255-3924 or **Worldwide:** +1-813-248-0585

- **After Inhalation:** Supply fresh air; consult doctor in case of complaints.
- **After Eye Contact:** Immediately flush eyes with plenty of water for at least 15 minutes. Remove contact lenses, if present and easy to do. Continue Rinsing. Get medical attention if irritation develops and persists.
- **Ingestion:** If swallowed, seek medical attention. Administer 2 glasses of water or milk. Do NOT induce vomiting unless directed to do so by medical personnel.

SPIRAL FIRE FEATURE

! WARNING

1. Severe injury may result from improper use.
2. Avoid breathing mist or vapors.
3. For **OUTDOOR USE ONLY**.
4. Use only in a well-ventilated area.
5. Maintain a minimum distance of 24 in. or 61 cm. to any flammable surface in any direction.
6. Use only ZIPPO Gel Fuel to avoid a flash fire - 350g size fuel for Model No. Z11A23 Spiral XL and 180g size fuel for Model No. Z11B23.
7. **NEVER** add fuel to a hot or burning device.
8. Do NOT use liquid ethanol or other flammable liquids such as white gas or gasoline.
9. Do NOT touch or move Gel Fuel canister while lit.
10. Do NOT touch or move Spiral Fire Feature while lit. The glass and base become **EXTREMELY HOT**.
11. Allow to cool before handling.
12. Always operate Spiral Fire Feature vertically in the upright position.
13. **NEVER** lay Spiral Fire Feature on its' side horizontally which can damage the glass and cause a fire.
14. Do NOT operate the Spiral Fire Feature if the glass is chipped, cracked, or damaged.
15. Do NOT store the included Snuffer Plate inside the main chamber. Closing the door will damage the glass.
16. DO NOT disassemble the Spiral Fire Feature or attempt to repair or modify it in any manner.
17. Always use the included Snuffer to extinguish the flame when using the Spiral Fire Feature.
18. Do NOT place any objects above the Spiral Fire Feature while it's actively burning.

READ & SAVE THESE INSTRUCTIONS

THIS PRODUCT IS INTENDED FOR PRIVATE USE ONLY.

FOR OUTDOOR USE ONLY.

DO NOT USE INDOORS.



USING YOUR PRODUCT

PLEASE READ ALL **"IMPORTANT SAFETY INSTRUCTIONS"** IN THIS MANUAL BEFORE PROCEEDING.

1 ASSEMBLY

A-D

1. Open box as indicated on outer labeling (TBD pkg).

A. Carefully remove all components from box.

CAUTION

- Glass is fragile. Handle with care and install slowly.

CAUTION

- Make sure glass is fully seated and is securely held in place by support spring tabs before proceeding.

PLEASE NOTE

B. When installed correctly, both glass halves are offset to create a slight air gap. The air gap distance should be uniform from top to bottom.

C. Place Gel Fuel and Fuel Cover to the side for ignition later.

D. Slide Snuffer into backside storage slot on base 180° opposite the door.

2 PLACEMENT

WARNING

- FOR OUTDOOR USE ONLY.
- Use only in a well-ventilated area.
- The Product must only be used on solid, level, and even surfaces or grounds.

- Maintain a minimum distance of 24 in. or 61 cm. to any flammable surface in any direction.

3 IGNITION

A-G

A. Open the door completely 180° degrees.

PLEASE NOTE:

- The ramped hinge design will help keep the door in two (2) distinct positions: 1) OPEN 2) CLOSED. Use gentle force when opening and closing the door.
 - It's normal for the door and hinge to temporarily slide up while being opened, then slide down when in the fully OPEN position and vice versa when CLOSED.
- B. Open away from you when removing lid.
C. Carefully place Gel Fuel can into the main chamber, ensuring the can is centered in the recessed groove.
D. Place Fuel Cover over Gel Fuel can.

WARNING

- Do NOT touch or move Gel Fuel, or Spiral Fire Feature after ignition. The glass and base become EXTREMELY HOT. Serious burns, injury or fire can occur. Use EXTREME CAUTION.
 - Flames can be hard to see in direct sunlight.
- E. Ignite fuel using an extended lighter or long match.
F. Close door.
G. The Spiral Fire Feature will create a tall, spinning flame within seconds once the door is closed.

4 EXTINGUISHING

- A. Remove the Snuffer from the back storage slot.
- B. Hold Snuffer in one hand. Ensure Snuffer recessed top and finger guard are both facing DOWN.
- C. Use tab to completely open door.

WARNING

- Device and glass will be hot.
- D. Immediately place Snuffer on top of Fuel Cap to extinguish flame. Ensure Snuffer is fully seated on cap with no air gaps.
- E. Wait 10 seconds to ensure flame is fully extinguished and then remove snuffer

WARNING

- Be sure flame is fully extinguished.
- Slowly remove Snuffer to ensure flame is extinguished.

- F. Close door using tab and allow Spiral Fire Feature to completely cool.
- G. Return Snuffer to storage slot with finger guard facing UP.
- H. After unit is completely cool, open door, remove Fuel Cover, remove Gel Fuel from Spiral Fire Feature and reinstall lid.
- I. Return Fuel Cover and close door.
- J. Dispose or recycle Gel Fuel responsibly per relevant state and federal environmental laws and regulations.

5 CLEANING

WARNING

- Do not remove glass for cleaning.

WARNING

- Allow Spiral Fire Feature to cool before handling or cleaning.

A. Do NOT use harsh chemicals or cleaners.

B. Over time the Gel Fuel may leave small residue spots on the glass. Use a mild soap and water solution, then rinse components thoroughly and dry before use.

6 STORAGE

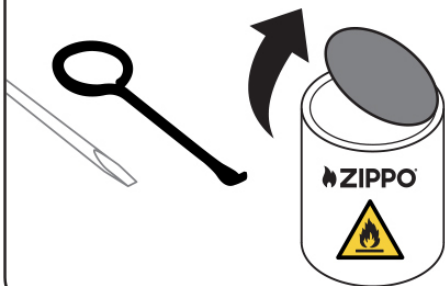
WARNING

- Allow Spiral Fire Feature to cool before handling.
- NEVER lay the Spiral Fire Feature on its' side horizontally which can damage the glass.
- Always store Spiral Fire Feature vertically in the upright position.

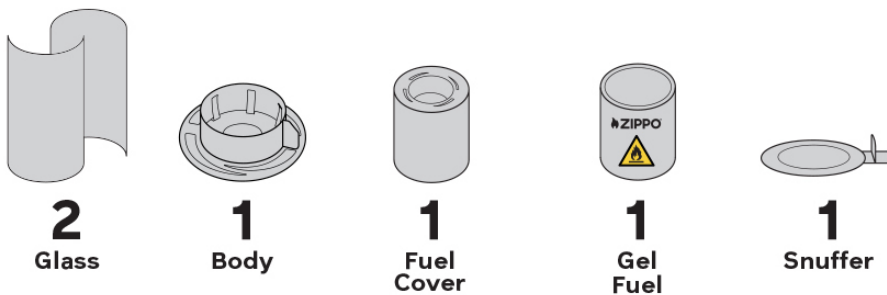
A. Store in a cool dry place away from sunlight or elements.

B. Store in a safe location to protect glass from damage.

TOOLS

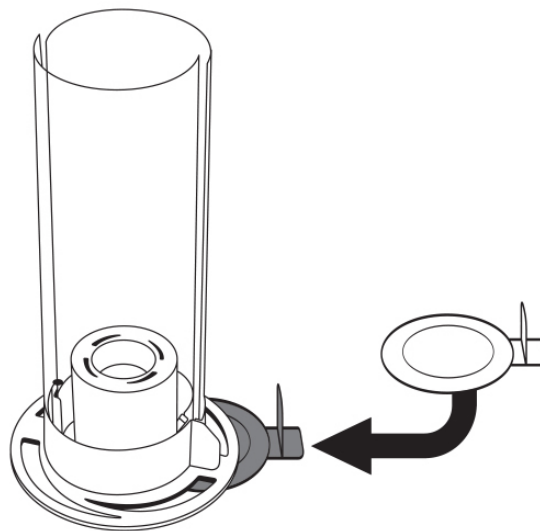
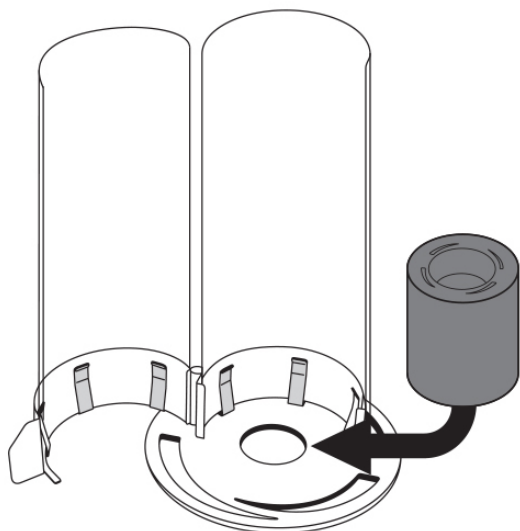


CONTENTS

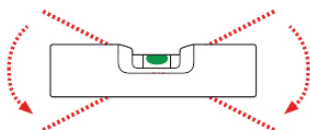


1 ASSEMBLY

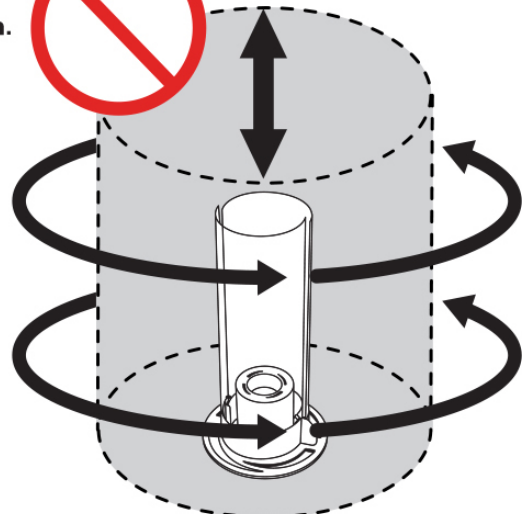
A-D



2 PLACEMENT • Outdoor Use Only

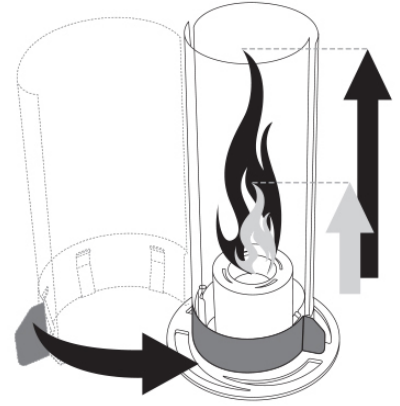
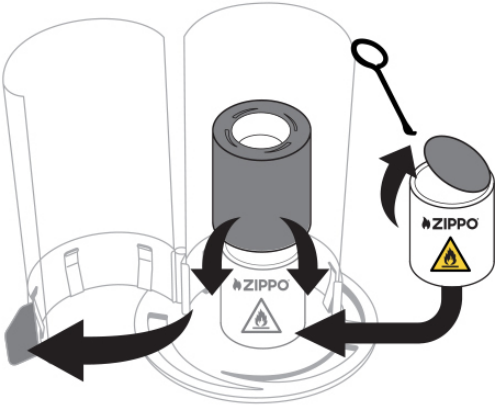


24 in./61 cm.



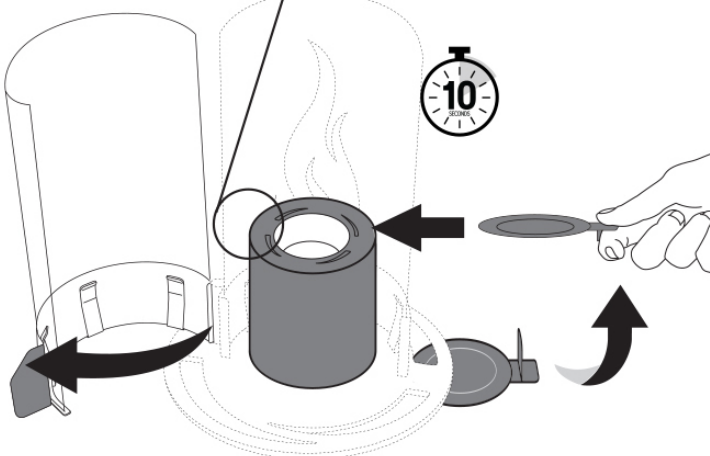
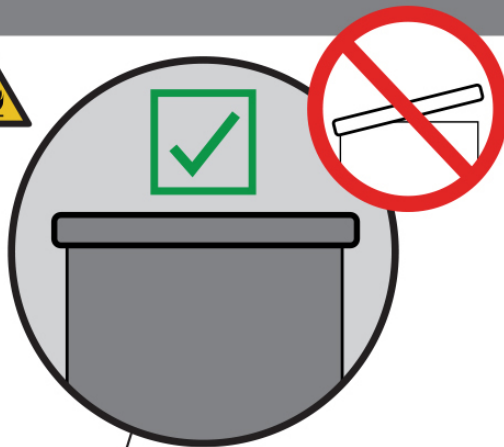
3 IGNITION

A-G



4 EXTINGUISHING

A-J



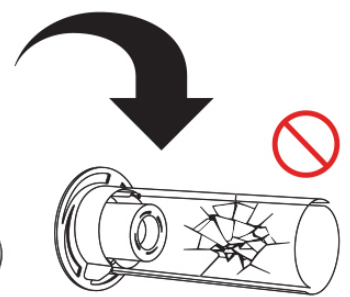
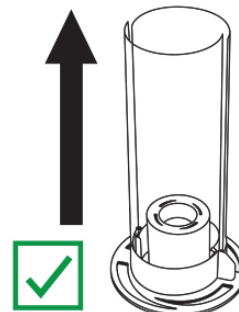
5 CLEANING

A-B



6 STORAGE

A-B



ZIPPO CONSUMER RELATIONS

- THANK YOU FOR PURCHASING THIS ZIPPO PRODUCT.
- If you have a question about this product, contact Zippo Consumer Relations at:
 - In the U.S.
 - Chat: www.zippo.com
 - Support: www.zippo.com/support
 - Email: CR@Zippo.com
 - Phone: 1-888-442-1932
Mon.-Fri. 8a-5p EST

2 YEAR LIMITED WARRANTY

Terms and conditions:

WHAT IS COVERED

- Zippo Manufacturing Company warrants the Spiral Fire Feature on defects in material and workmanship under normal use.
- Warranty coverage extends to the original purchaser and begins on the date of purchase and ends two (2) years thereafter.

WHAT IS NOT COVERED

- This warranty does not cover, and Zippo shall have no liability with respect to, damage, failure or loss caused by or attributable to abuse, accident, misuse, improper or abnormal use, neglect, improper or unauthorized repair, failure to follow instructions provided by Zippo, or "acts of God" or other contingencies beyond the control of Zippo.
- Incidental or consequential damages, although some states do not allow the exclusion or limitation of incidental or consequential damages, so the above limitation or exclusion may not apply to you.

WARRANTY LIMITATIONS & EXCLUSIONS

- Other than as to the foregoing, this warranty is in lieu of all other express and implied warranties. Any implied warranties which by law cannot be excluded are limited to this same period.
- Some states do not allow limitations on how long an implied warranty lasts, so the above limitation may not apply to you. This warranty gives you specific legal rights, and you may also have other rights which vary from state to state.

WARRANTY SERVICE

- Proof of purchase is required for warranty service.
- Keep your purchase receipt in a safe place.
- To obtain proper instructions for service under this limited warranty, refer to the repair instructions at zippo.com or contact Zippo Consumer Relations at consumerrelations@zippo.com or 1-888-442-1932.
- **DO NOT return the Product to the retail store.**
- If the Product is covered by the warranty, Zippo will repair or replace the item or will refund the purchase price.
- Disassembling the Spiral Fire Feature or attempting to repair or modify it in any manner will void this warranty.

DISPOSAL INFORMATION

- Zippo Product are made from high quality materials. Always recycle where possible.
- Dispose or recycle responsibly according to relevant state and federal environmental laws and regulations.

ONLINE SUPPORT

- For online help, general tips, videos, and use information about Zippo Product:
www.zippo.com/support

MANUFACTURER INFORMATION

- Zippo Manufacturing Company
33 Barbour Street
Bradford, PA 16701
USA
www.zippo.com

zippo®

33 Barbour Street
Bradford, PA 16701
zippo.com