



Pipe Lighter Insert
English USA – en



UNFILLED INSERTS WARNINGS:

WARNING: KEEP OUT OF REACH OF CHILDREN.

Ignite lighter away from face and clothing. When filled, will contain flammable fluid. Never expose to heat above 122° F (50° C) or to prolonged sunlight. Never puncture or put in fire. Be sure flame is out after use. This Insert or lighter does not self-extinguish – close cover to put out. Fuel is a skin irritant, do not overfill.

THIS LIGHTER IS NOT CHILD RESISTANT.



© Zippo Manufacturing Company 2025.

181478_1B

Thank you for purchasing the ZIPPO® PIPE LIGHTER INSERT ("Product"). **READ ALL WARNINGS AND INSTRUCTIONS** before using your Product for the first time. Improper use of this Product may result in Product damage, for which damages you ("Purchaser") and not Zippo Manufacturing Company ("Zippo") are responsible.

If you have any problems with the operation of your Product, **DO NOT return it to the retail store**. Instead, consumers in the U.S. should contact Zippo Consumer Relations at 888-442-1932 or visit zippo.com

WARNING: Read all safety warnings and instructions. Failure to follow the warnings and instructions may result in Product damage and/or serious injury. Extra care should be taken to prevent burn, injury, or fire. Save these instructions for future reference.

GENERAL SAFETY WARNINGS AND INSTRUCTIONS:

- Keep lighters and their fuels out of reach of children.
- Ignite lighter away from face and clothing.
- Be sure flame is out after use.
- When filled, will contain flammable fuel.
- Use lighter fuel only.
- Hold insert or lighter away from face.
- Use Zippo® or Ronson® lighter fuel for best performance.
- Never expose to heat above 50°C (122°F) or to prolonged sunlight.
- Never puncture or put in fire.



For repair instructions, log onto zippo.com

zippo ZIPPO MANUFACTURING COMPANY
33 Barbour Street | Bradford, PA 16701 U.S.A.

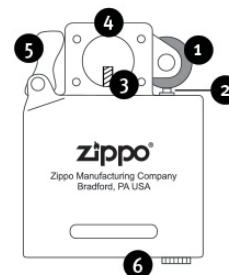


- This insert is only designed to work with regular-sized genuine Zippo Windproof Lighter models including: Regular, Vintage, Armor®, and 1941 Replica.
- DOES NOT work with Slim or 1935 Replica models.
- Follow all instructions and warnings provided by manufacturer of any other item when using this product.

DISCLAIMER:

ZIPPO WILL NOT BE RESPONSIBLE OR LIABLE FOR ANY DAMAGES YOU OR ANY THIRD PARTY MAY SUFFER AS A RESULT OF USE OR MISUSE OF THIS PRODUCT.

Pipe Lighter Insert



1. Flint Wheel
2. Flint
3. Wick
4. Flame
5. Cam
6. Fuel Reservoir

To fill your Zippo insert or lighter

- Use Zippo or Ronson lighter fuel for best performance
- Fill slowly, never overfill. Lift felt pad to reveal the packing material in the fuel chamber (1). Saturate the packing with Zippo lighter fuel. Stop filling when fuel reaches top of packing. If overfilled it can leak fuel. Fuel is a skin irritant.
- Wipe lighter and hands dry before igniting. Place insert into lighter case (2). If overfilled, do not put in pocket or next to skin. If fuel gets on skin, wash the affected area. If irritation persists or worsens, see a Doctor.
- Be sure fuel can is closed and there is no spilled fuel in vicinity before igniting. This is flammable fluid.

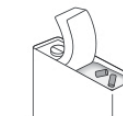
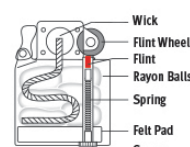
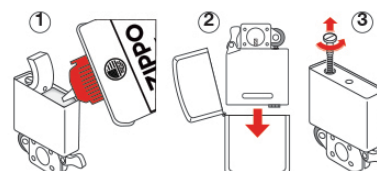
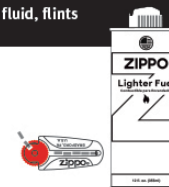
To re-flint your Zippo insert or lighter

Remove screw (3) and attached spring at end of fuel chamber. Be sure old flint is removed from tube. Place new flint in tube and replace spring, screw lightly. Be sure screw is turned as far as it will go; if not, cover will not close properly. If wheel binds after new flint is inserted, turn wheel backwards a few times.

Wick Maintenance

When wick becomes black from carbon, pull it up with tweezers until clean wick appears (approx. 1 cm), then trim the end making it even with the chimney height. Perform this maintenance 1 or 2 times a year. It will be necessary to replace the wick after it has been trimmed more than 2 or 3 times. For more information visit the website listed.

Always use genuine Zippo fluid, flints and wicks.



TIP: Keep extra flint supply under felt pad (4).

ZIPPO MANUFACTURING COMPANY
33 Barbour Street
Bradford, PA 16701 U.S.A.
zippo.com