

zippo®

Mini Flex Neck Candle Lighter



Initial Fill Instructions

WARNING: This lighter does not contain butane – be sure to carefully fill lighter according to these instructions.

1. Fill with Zippo Butane or other high-quality butane gas. Please ensure proper mating between the refill container and fuel reservoir of the lighter during refilling to avoid leakage of fuel. Do not use lighter for a minimum of 4 hours. This is to let the butane and internal parts stabilize before use. Igniting the lighter prematurely could cause an excessive and dangerous flame height.
2. When igniting lighter for the first time, use with caution and aim safely away from person and combustible materials.



Zippo Butane Fuel is recommended for your Zippo Mini Flex Neck Candle Lighter and other refillable butane products.

121499_rC

LIMITED WARRANTY

Zippo warrants that all parts are free of defects in manufacture and workmanship for a period of 1 year from date of purchase (proof of purchase required). Damage to a Zippo Mini Flex Neck Candle Lighter caused by abuse or misuse is not covered. The finish is not warranted.

This limited warranty gives you specific legal rights, and you may also have other rights which vary by state or country. Other than as to the foregoing, this warranty is in lieu of all other express and implied warranties. Any implied warranties which by law cannot be excluded are limited to this same period. Some states do not allow limitations on how long an implied warranty lasts, so the above limitation may not apply to you.

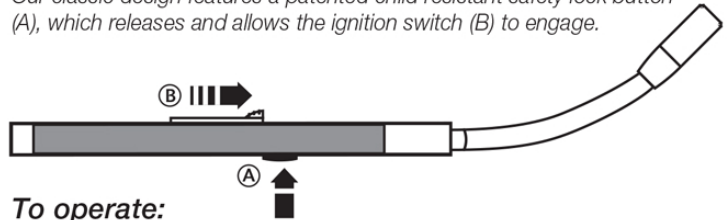
To obtain proper instructions for service under this limited warranty, refer to repair instructions at zippo.com, e-mail Zippo Consumer Relations at consumerrelations@zippo.com or U.S. consumers can contact Consumer Relations at 1-888-442-1932. Please **do not mail** your Zippo Mini Flex Neck Candle Lighter to Zippo. **Do not return the lighter to the retail store.** Consumers outside the U.S. should contact your local distributor and under no circumstances should you mail your Mini Flex Neck Candle Lighter to Zippo. Please follow the advice of local distributor in your country; see listing on zippo.com.

zippo®

Zippo Manufacturing Company
33 Barbour Street
Bradford, PA 16701 U.S.A.

INSTRUCTIONS

Our classic design features a patented child resistant safety lock button (A), which releases and allows the ignition switch (B) to engage.



To operate:

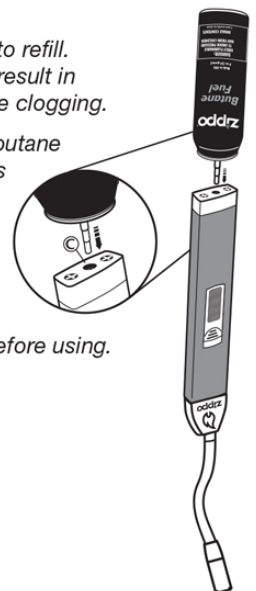
- 1) Depress and hold safety lock button (A).
- 2) Slide ignition switch (B) forward to ignite and hold to maintain flame.
- 3) Release the ignition switch to extinguish flame and stop fuel flow.

Do not refuel over containers such as sinks or near a flame, heat source or sparks. Butane tends to settle and collect in the lowest point. Use only in well ventilated area.

Keep lighter and fuel out of reach of children.

To refill with butane fuel:

- 1) Use only a high-quality grade butane fuel to refill. Use of other than Zippo Butane Fuel may result in damage to the filling valve and could cause clogging.
- 2) Always refill in the position shown. Place butane fuel nozzle into filling valve (C) and depress with firm, even pressure. Hold for several seconds. Repeat if necessary. Please ensure proper mating between the refill container and fuel reservoir of the lighter during refilling to avoid leakage of fuel.
- 3) Wait at least two minutes after refueling before using.



Complies with ASTM F2201-10 and is Child Resistant
Printed in China