



Genuine Zippo Windproof Lighter

From timeless design to the unmistakable "click" . . . from the quality of materials and workmanship to the Lifetime Guarantee . . . these are the features that make a Zippo lighter so satisfying to own.

The fact that the Zippo windproof lighter has endured, virtually unchanged, for over 80 years is proof of its appeal to millions of users and collectors.

zippo.com

©2018 Zippo Manufacturing Company.



WARNING: KEEP OUT OF REACH OF CHILDREN.

Ignite lighter away from face and clothing. When filled, will contain flammable fluid. Never expose to heat above 122° F (50° C) or to prolonged sunlight. Never puncture or put in fire. Be sure flame is out after use. This lighter does not self-extinguish – close cover to put out. Fuel is a skin irritant, do not overfill.

THIS LIGHTER IS NOT CHILD RESISTANT.

For care of your new lighter, visit zippo.com/care. Zippo products are legally protected by patents. Visit zippo.com/patents for details.

181350-g



For repair instructions, log onto zippo.com

Zippo Manufacturing Company

33 Barbour Street, Bradford, PA 16701

814-368-2700

zippo.com

To fill your Zippo lighter

- **Fill only with Zippo fluid.**
- Hold lighter in one hand. Use the other hand to remove lighter insert (1).
- **Fill slowly, never overfill.** Lift felt pad to reveal the packing material in the fuel chamber (2). Saturate the packing with Zippo lighter fluid. Stop filling when fuel reaches top of packing. If overfilled it can leak fuel. Fuel is a skin irritant.
- **Wipe lighter and hands dry before igniting.** Return lighter insert into case. If overfilled, do not put in pocket or next to skin. If fuel gets on skin, wash the affected area. If irritation persists or worsens, see a Doctor.
- **Be sure fuel can is closed** and there is no spilled fuel in vicinity before igniting. This is flammable fluid.

To re-flint your Zippo lighter

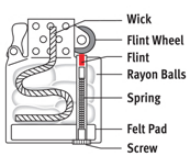
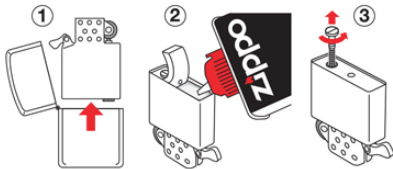
Remove screw (3) and attached spring at end of fuel chamber. Be sure old flint is removed from tube. Place new flint in tube and replace spring, screw lightly. Be sure screw is turned as far as it will go; if not, cover will not close properly. If wheel binds after new flint is inserted, turn wheel backwards a few times.

Wick Maintenance

When wick becomes black from carbon, pull it up with tweezers until clean wick appears (approx. 1 cm), then trim the end making it even with the chimney height. Perform this maintenance 1 or 2 times a year. It will be necessary to replace the wick after it has been trimmed more than 2 or 3 times. For more information visit the website listed.

Always use genuine Zippo fluid, flints and wicks.

Zippo lighter fluid is specially formulated for Zippo windproof lighters. It is clean burning, quick lighting, and long lasting.



TIP: Keep extra flint supply under felt pad (4).